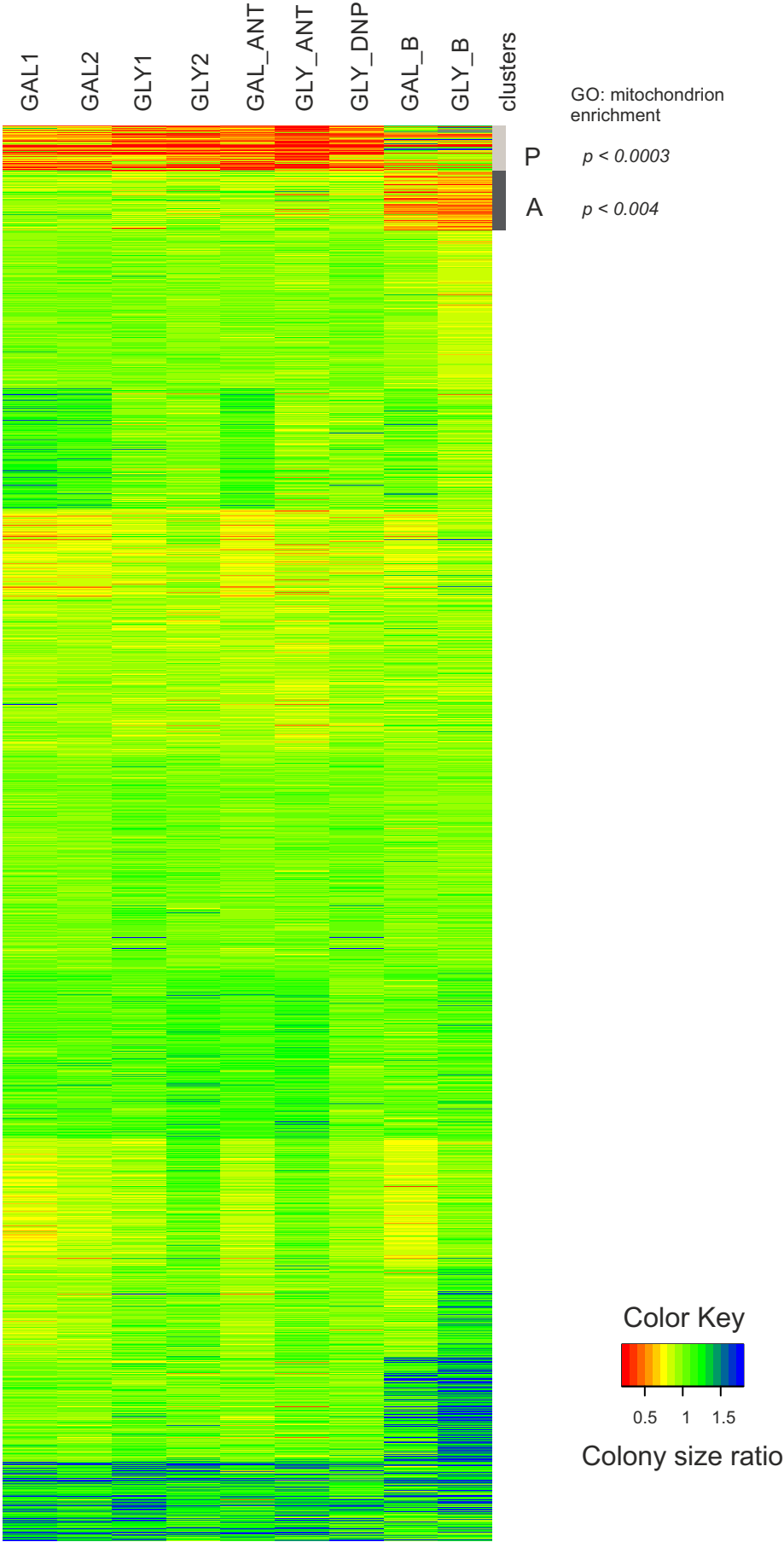
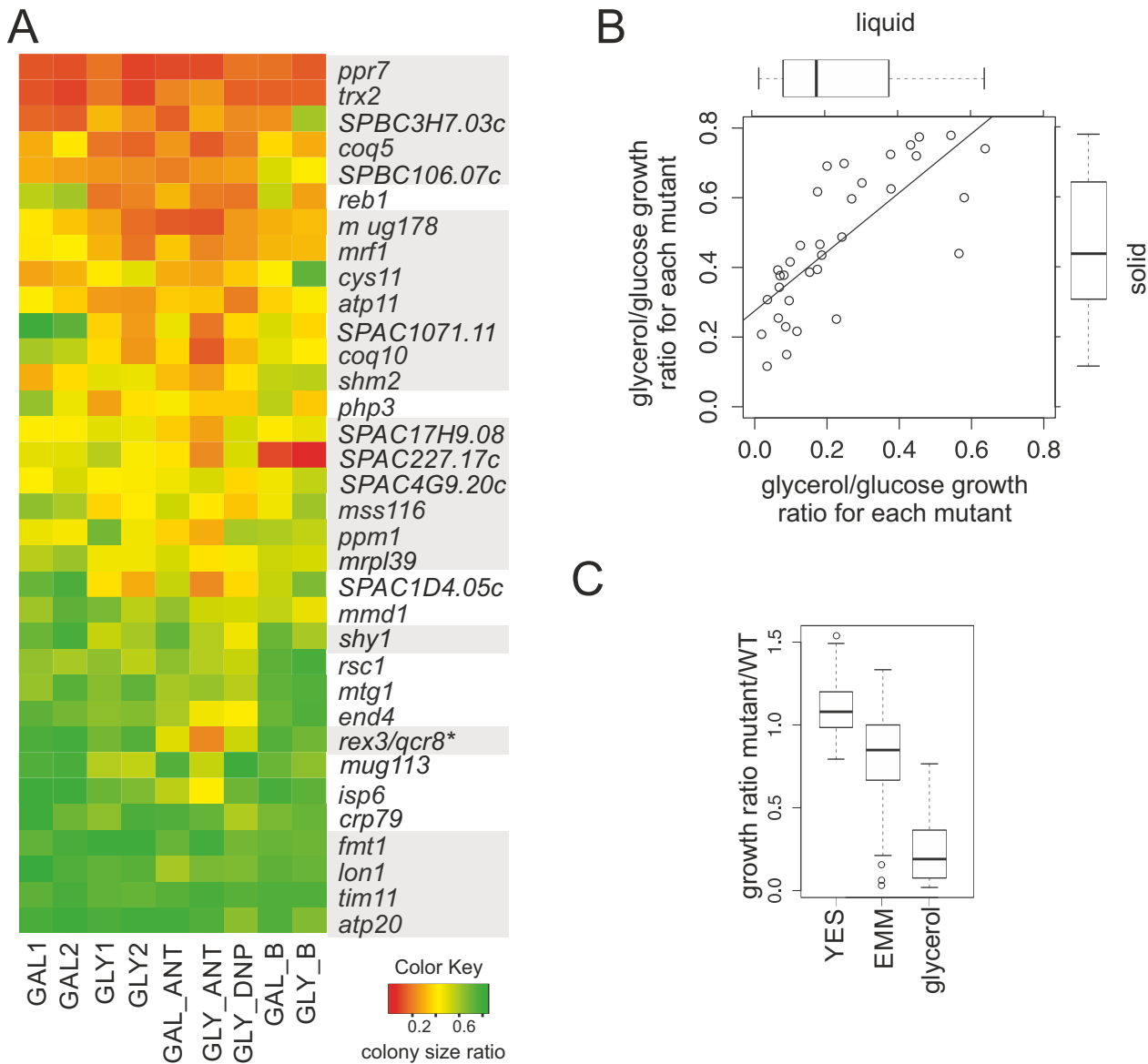


S1 Figure

Algorithm: Self-Organizing Map
Parameters:
Cluster on Rows
Distance metric = Euclidean
Max num of iterations = 50
Num of grid rows = 3
Number of grid col = 4
Initial learning rate = 0.03
Initial neighbourhood radius = 5
Grid topology = Hexagonal
Neighbourhood type = Bubble
Software used - GeneSpring 13.0

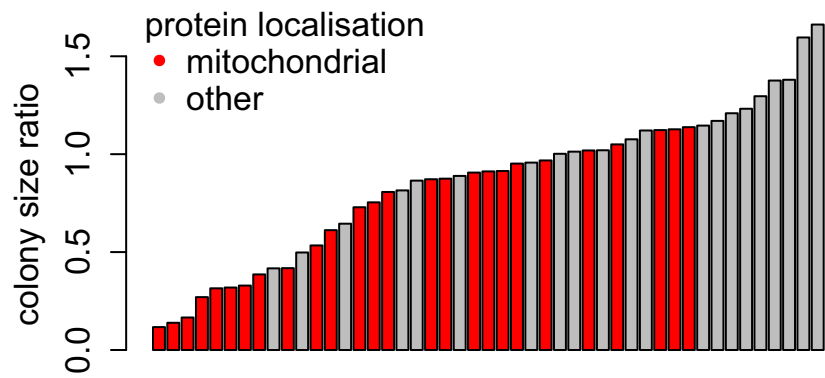


S2 Figure



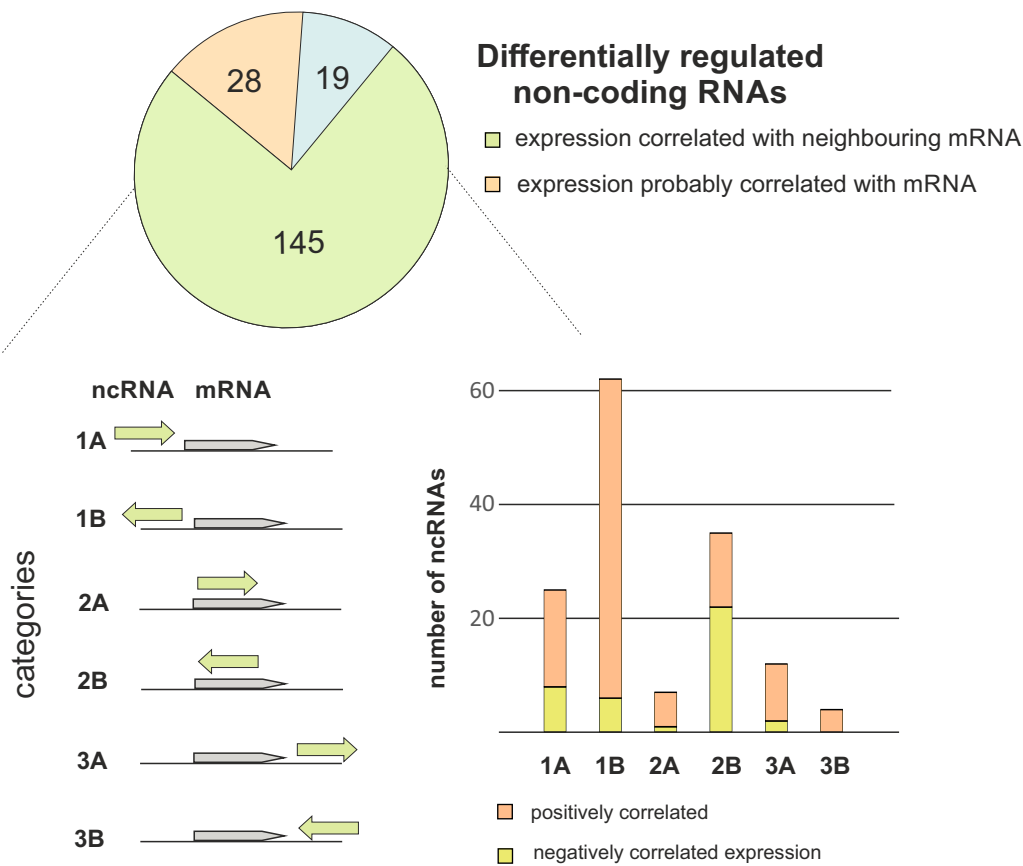
* deletion of *rex3* influences expression of *qcr8*, which is most probable cause of respiratory phenotype of this mutant (data not shown)

S3 Figure

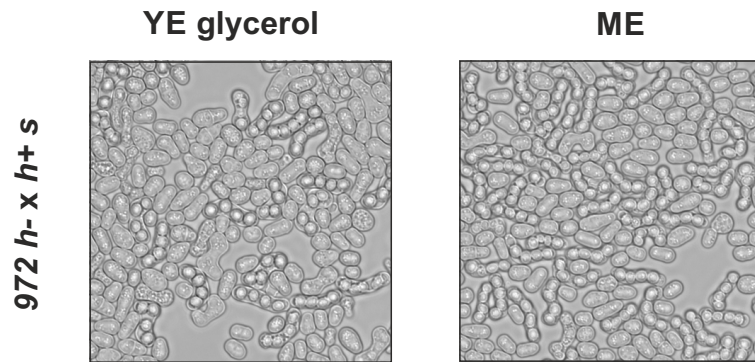


growth of auxotroph on glycerol vs glucose (S1 Table)
data for 47 strains from FYPO:0001934

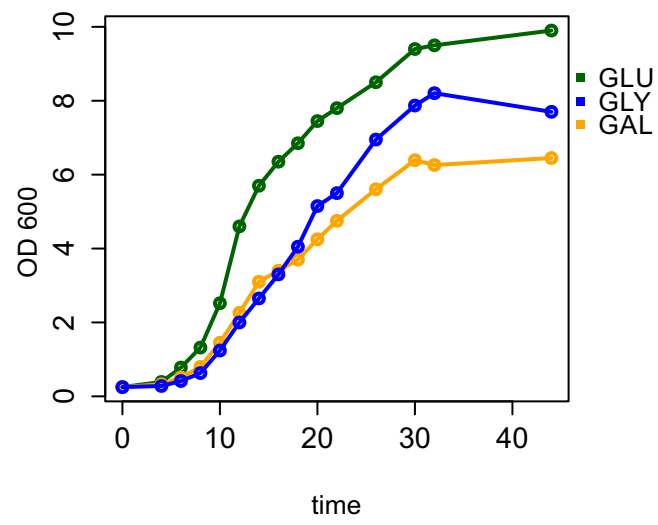
S4 Figure



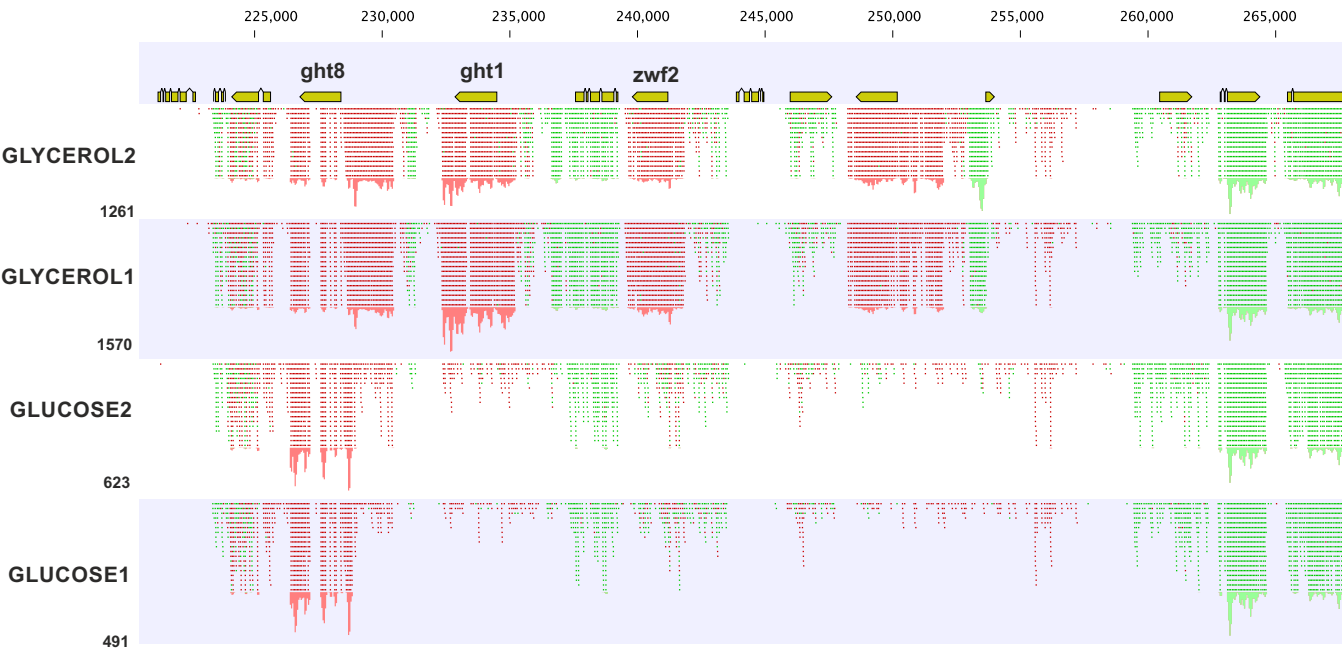
S5 Figure



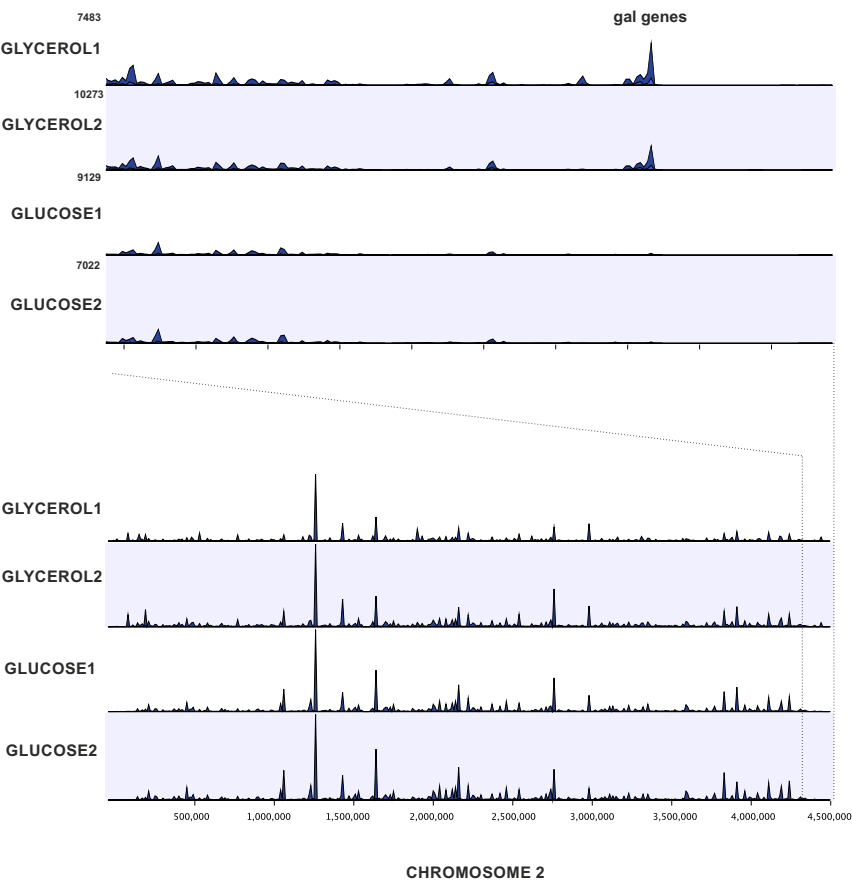
S6 Figure



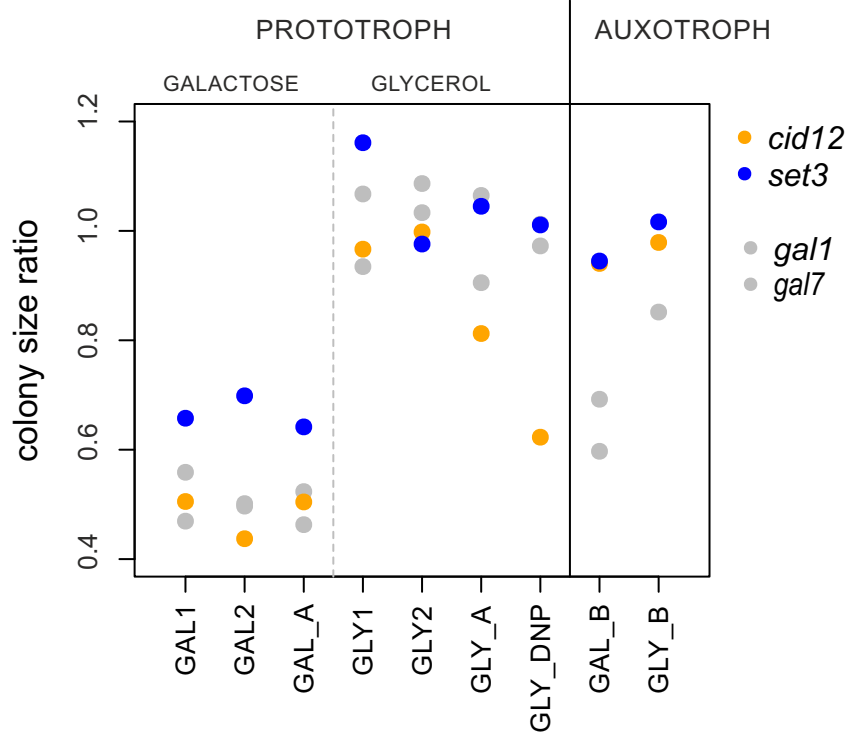
S7 Figure



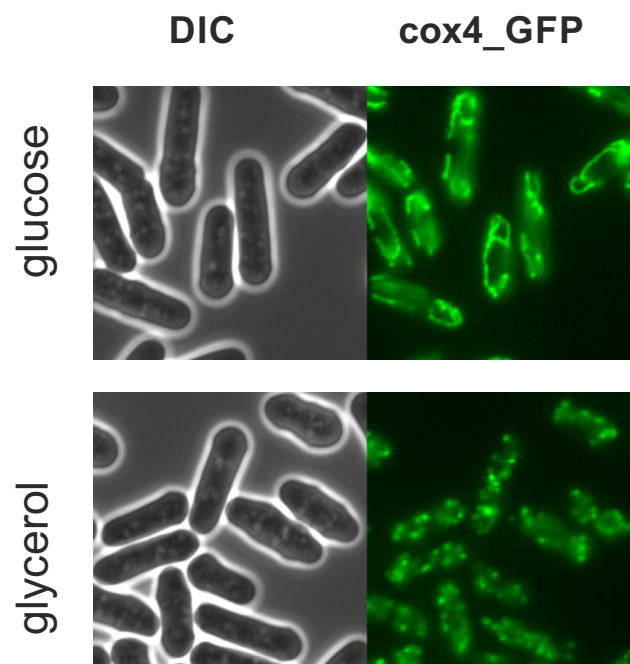
S8 Figure



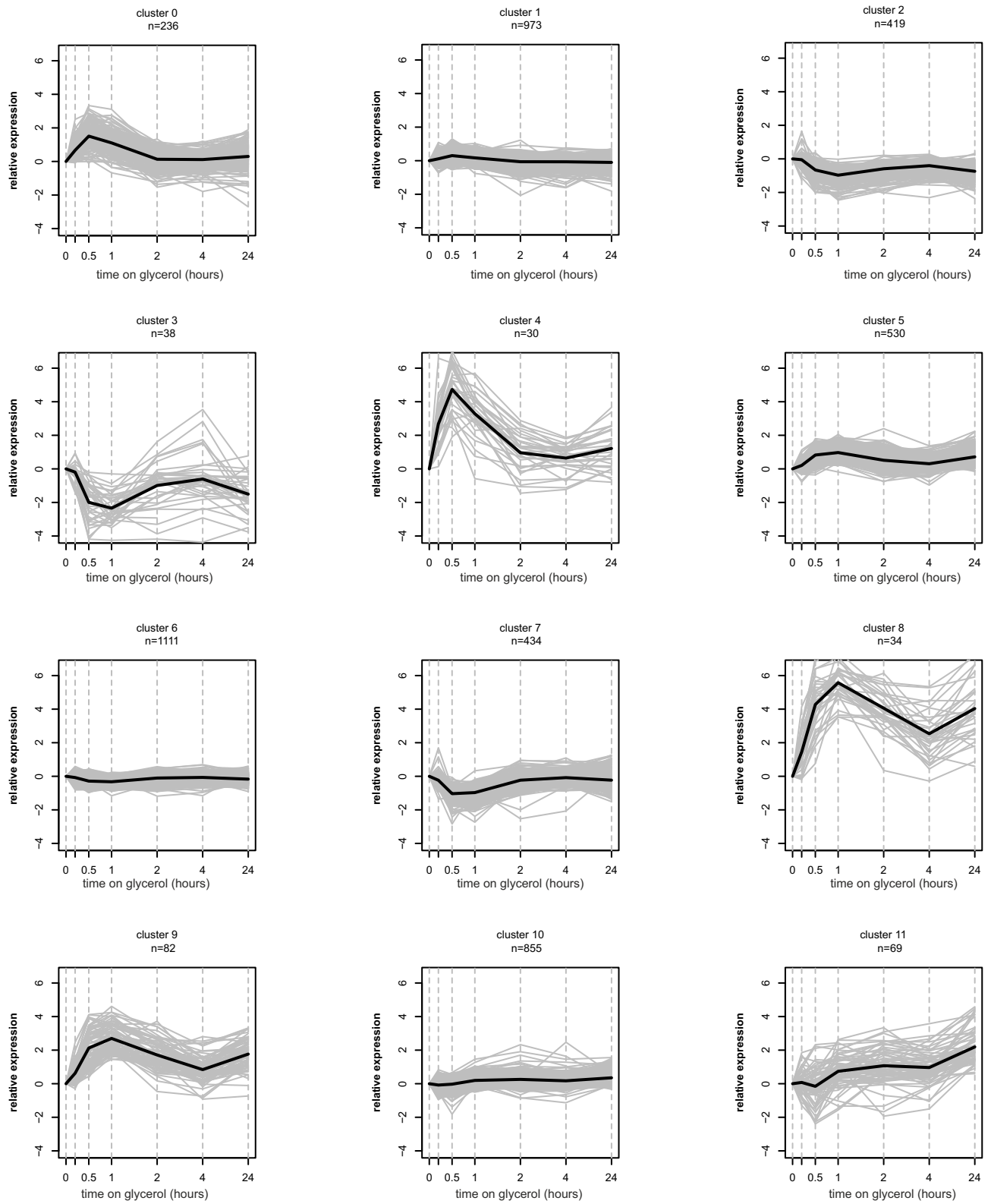
S9 Figure



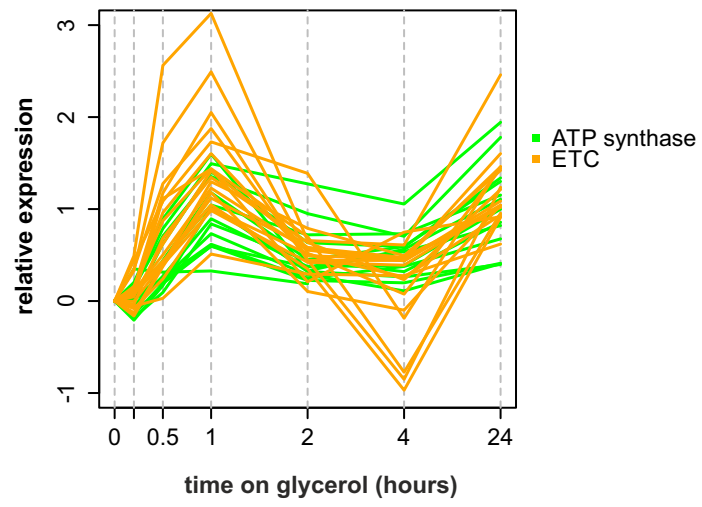
S10 Figure



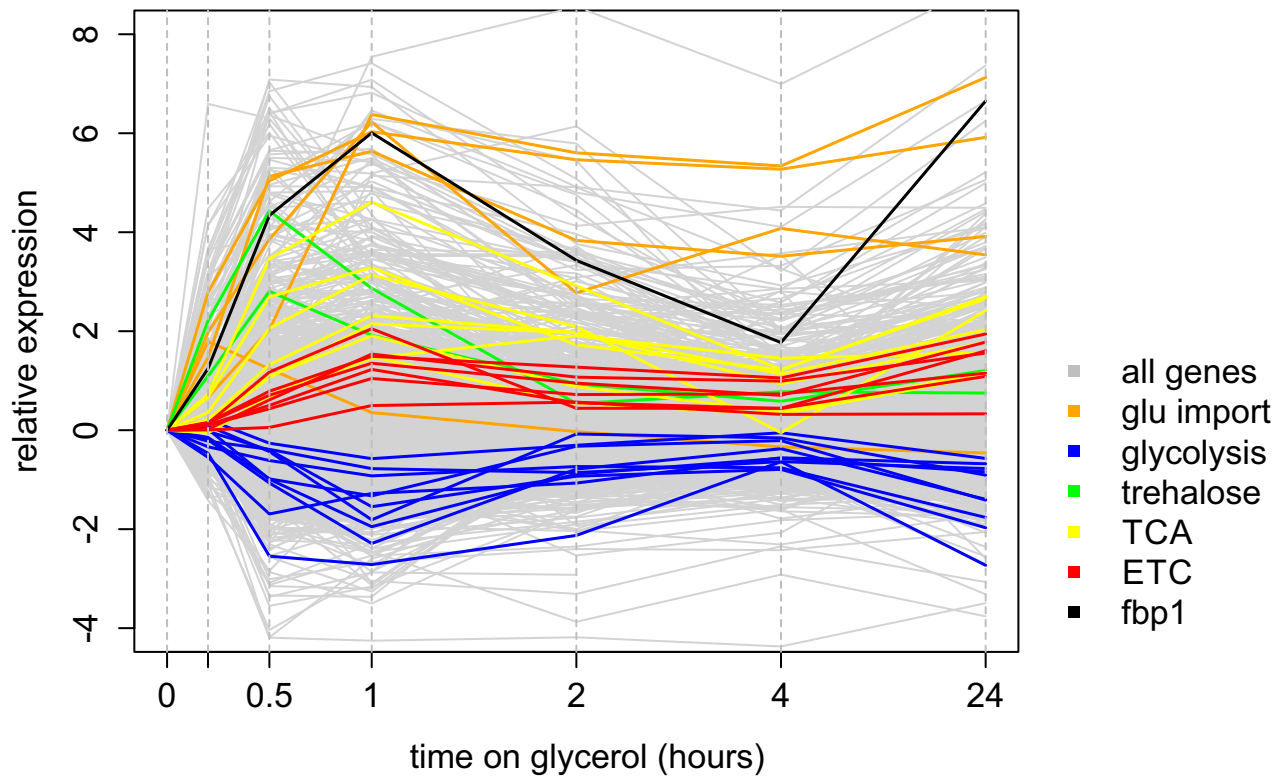
S11 Figure



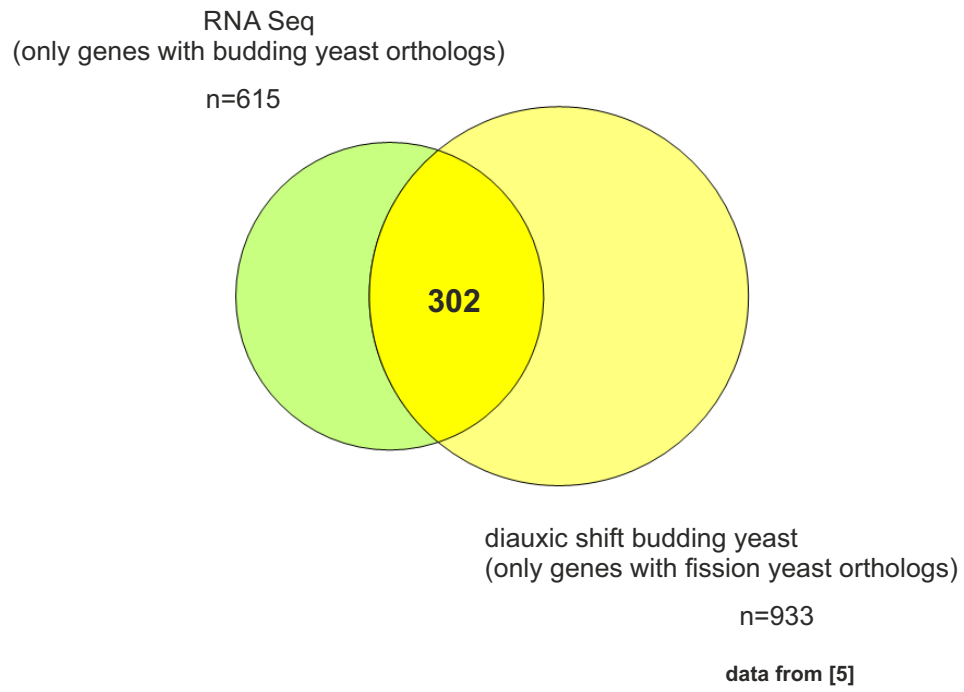
S12 Figure



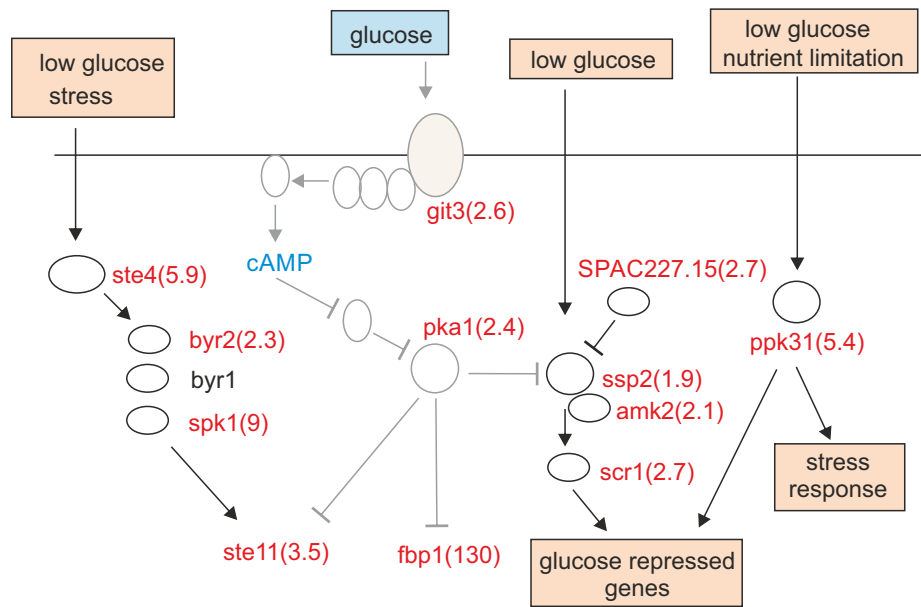
S13 Figure



S14 Figure

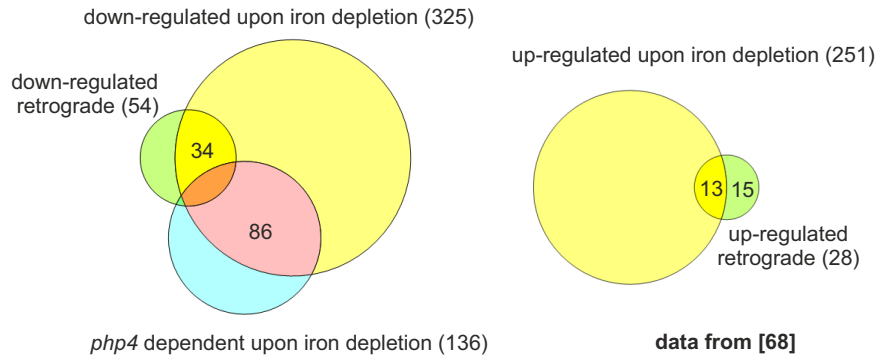


S15 Figure

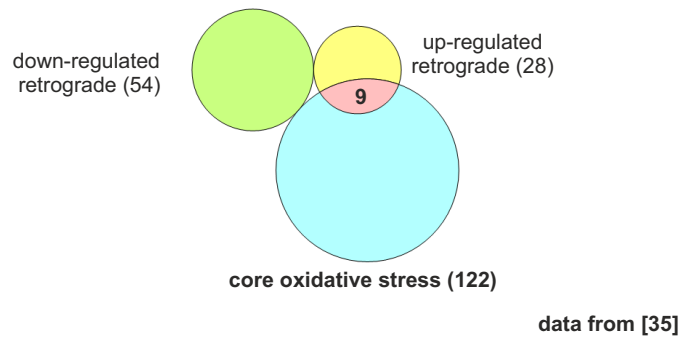


S16 Figure

Overlap of retrograde response pathway with genes altered upon iron depletion



Overlap of retrograde response pathway with core oxidative stress genes



Overlap of retrograde response pathway with core environmental stress response genes

